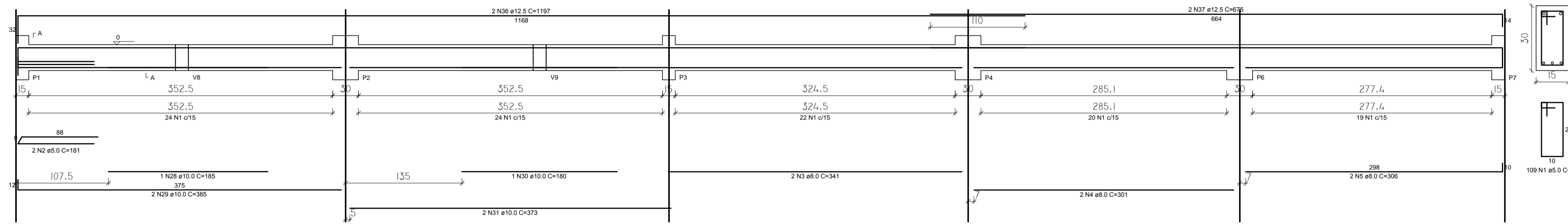
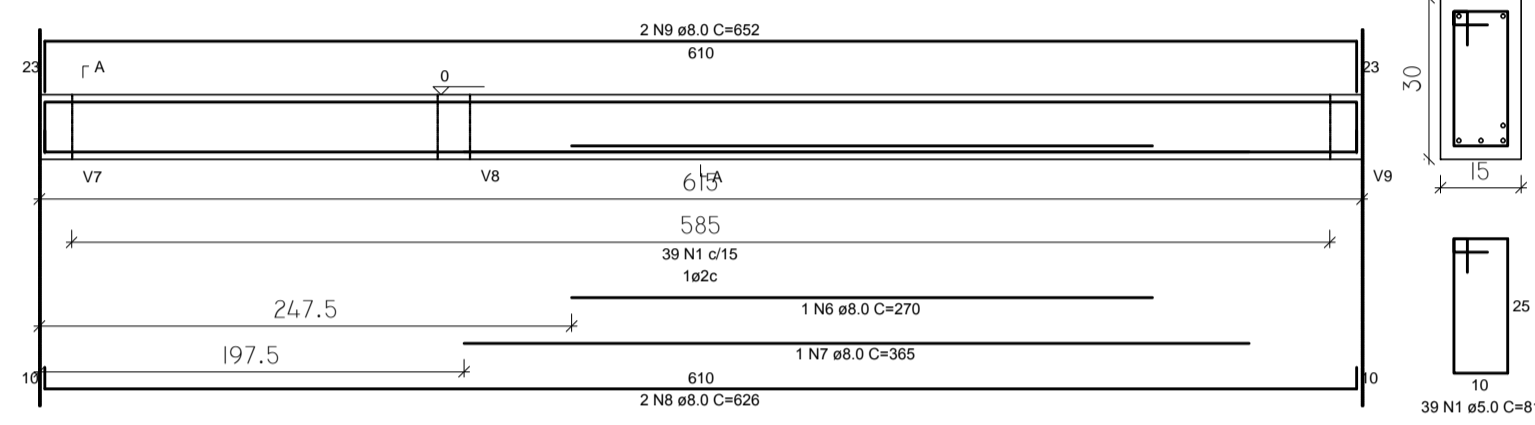


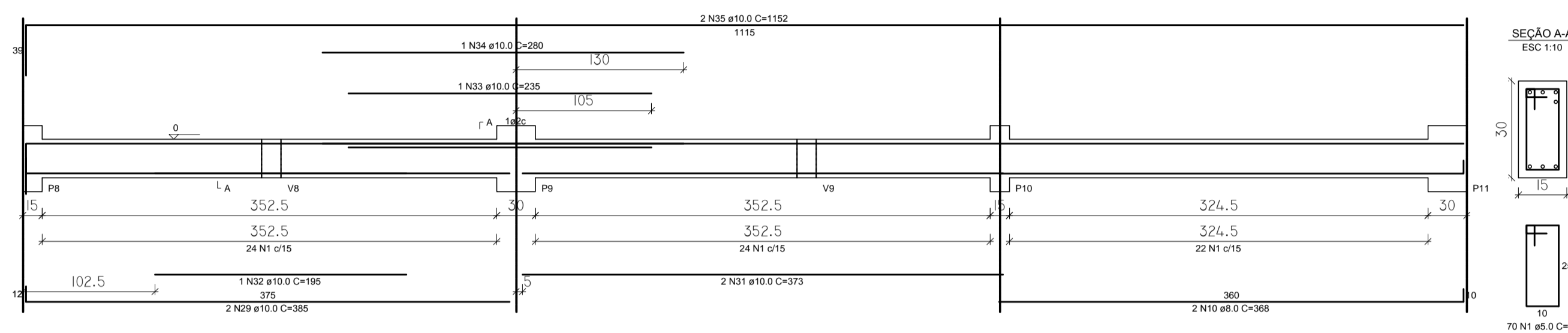
V1 (15 x 30)  
ESC 1:25



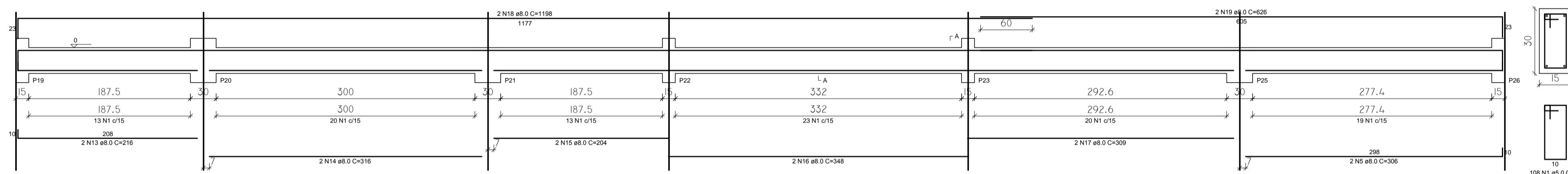
V2 (15 x 30)  
ESC 1:25



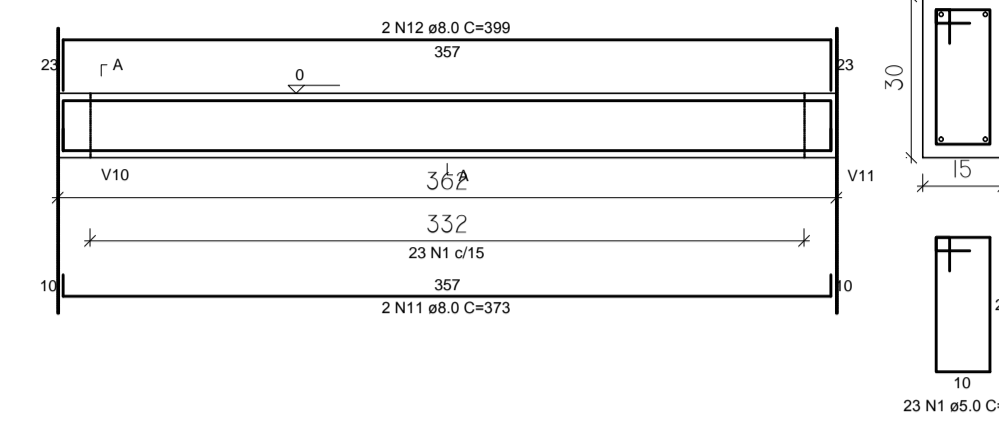
V3 (15 x 30)  
ESC 1:25



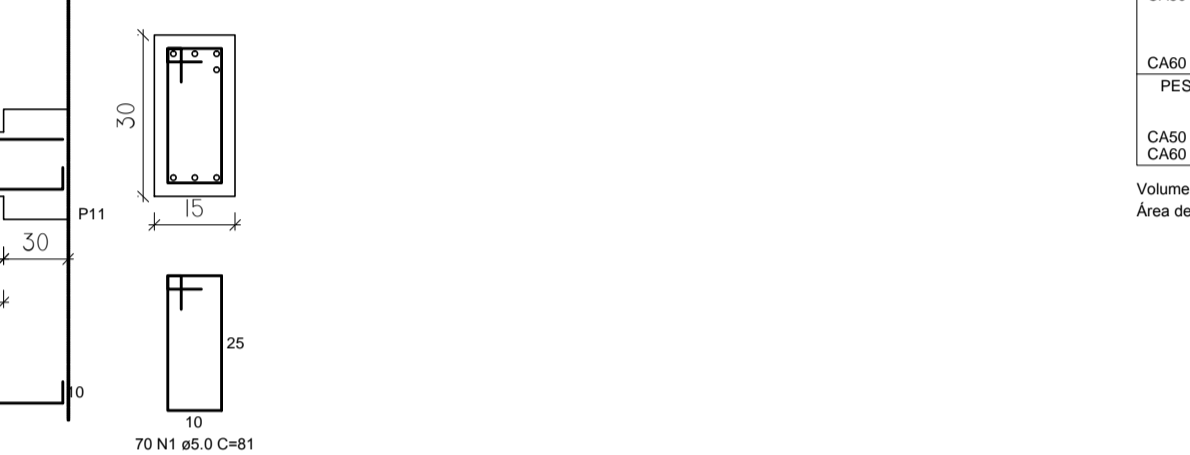
V6 (15 x 30)  
ESC 1:25



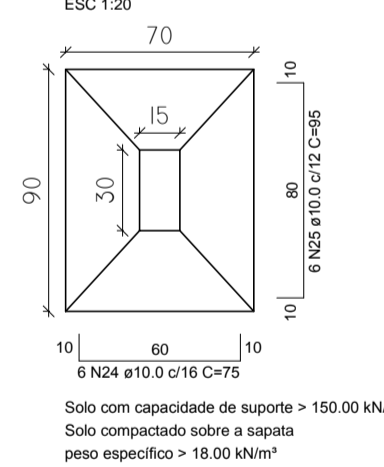
V4 (15 x 30)  
ESC 1:25



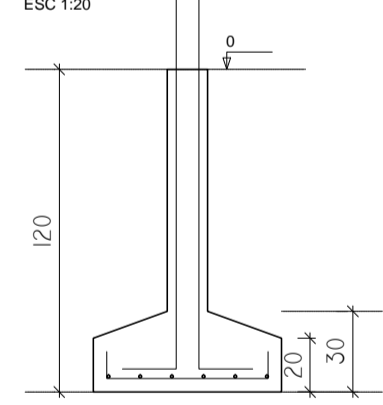
V8 (15 x 30)  
ESC 1:25



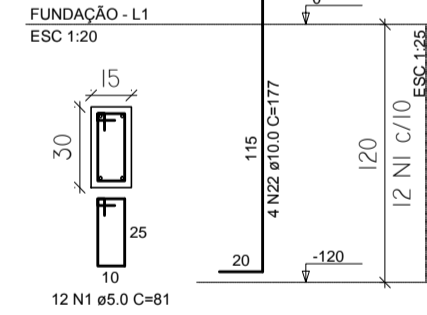
S10  
PLANTA  
ESC 1:20



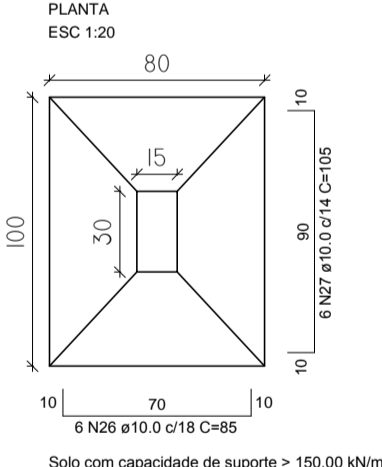
CORTE  
ESC 1:20



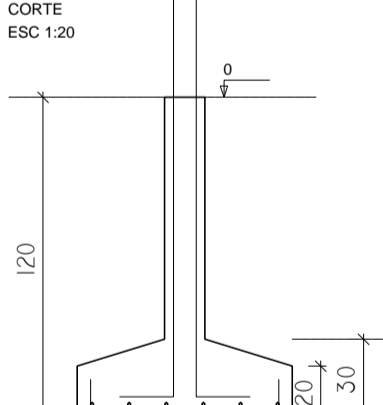
P10  
FUNDAÇÃO - L1  
ESC 1:20



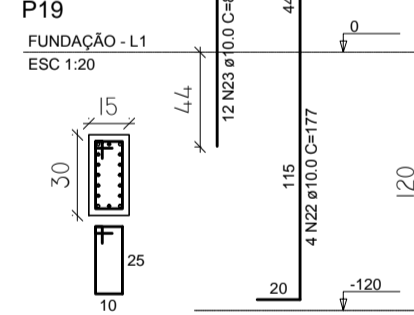
S8=S19=S22  
PLANTA  
ESC 1:20



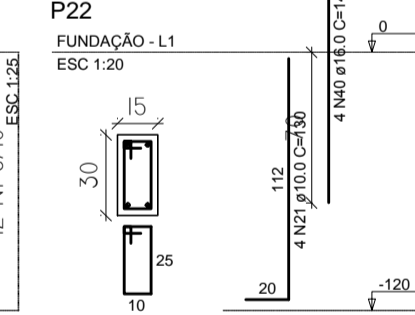
CORTE  
ESC 1:20



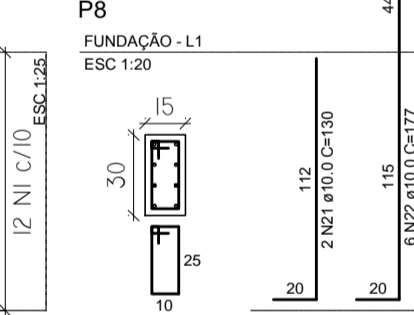
P19  
FUNDAÇÃO - L1  
ESC 1:20



P22  
FUNDAÇÃO - L1  
ESC 1:20



P8  
FUNDAÇÃO - L1  
ESC 1:20



RELAÇÃO DO AÇO

PR	P10	P19
P22	S10	SxS19
V1	V2	V3
V4	V6	V8

AÇO	N	DIAM (mm)	QUANT	C.UNIT (cm)	C.TOTAL (cm)
CABO	1	5,0	426	81	34506
CABO	2	5,0	2	181	362
CABO	3	8,0	2	341	682
CABO	4	8,0	2	301	602
CABO	5	8,0	4	306	1224
CABO	6	8,0	1	270	270
CABO	7	8,0	2	62	124
CABO	8	8,0	2	628	1252
CABO	9	8,0	2	62	124
CABO	10	8,0	2	398	796
CABO	11	8,0	2	373	746
CABO	12	8,0	2	399	798
CABO	13	8,0	2	216	432
CABO	14	8,0	2	316	632
CABO	15	8,0	2	204	408
CABO	16	8,0	2	348	696
CABO	17	8,0	2	309	618
CABO	18	8,0	2	1198	2396
CABO	19	8,0	2	628	1252
CABO	20	8,0	2	489	978
CABO	21	10,0	6	130	780
CABO	22	10,0	14	177	2478
CABO	23	10,0	12	87	1044
CABO	24	10,0	6	75	450
CABO	25	10,0	6	95	570
CABO	26	10,0	18	85	1530
CABO	27	10,0	18	105	1890
CABO	28	10,0	1	185	185
CABO	29	10,0	1	385	385
CABO	30	10,0	1	180	180
CABO	31	10,0	4	373	1492
CABO	32	10,0	1	195	195
CABO	33	10,0	1	225	225
CABO	34	10,0	1	280	280
CABO	35	10,0	2	1152	2304
CABO	36	12,5	2	1197	2394
CABO	37	12,5	2	675	1350
CABO	38	12,5	1	267	267
CABO	39	12,5	2	471	942
CABO	40	16,0	4	140	560

RESUMO DO AÇO

AÇO	DIAM (mm)	C.TOTAL (m)	PESO + 10% (kg)
CABO	8,0	151,9	66,8
CABO	10,0	151,5	102,8
CABO	12,5	48,5	52,1
CABO	16,0	5,6	9,7
CABO	5,0	348,7	59,1

PESO TOTAL (kg): 231,8  
CABO: 59,1

Volume de concreto (C-20) = 3,65 m³  
Área de forma = 52,14 m²

**Daniil Borys Silva Nunes**  
Engenheiro Civil  
CREA-Ba nº 75.637

PROPRIETÁRIO:  
RESP. TÉCNICO: Engº Civil DANIL BORYS SILVA NUNES  
Crea-BA 75.637/D

TÍTULO	PRANCHA:
<b>PROJETO - CENTRAL TURÍSTICA</b>	<b>10</b>
ESTRUTURAL - FUNDAÇÕES 1	
PROPRIETÁRIO - PREFEITURA MUNICIPAL DE IRAQUARA	EDIFICAÇÕES
ENDEREÇO - SEDE DO MUNICÍPIO	ÁREA DO TERRENO:
	ÁREA CONSTRUIDA:
	ÁREA TOTAL ÚTIL:
DATA: MAIO / 2018	DESENHO: Borys-boryscivil@gmail.com
	ESCALA: INDICADA